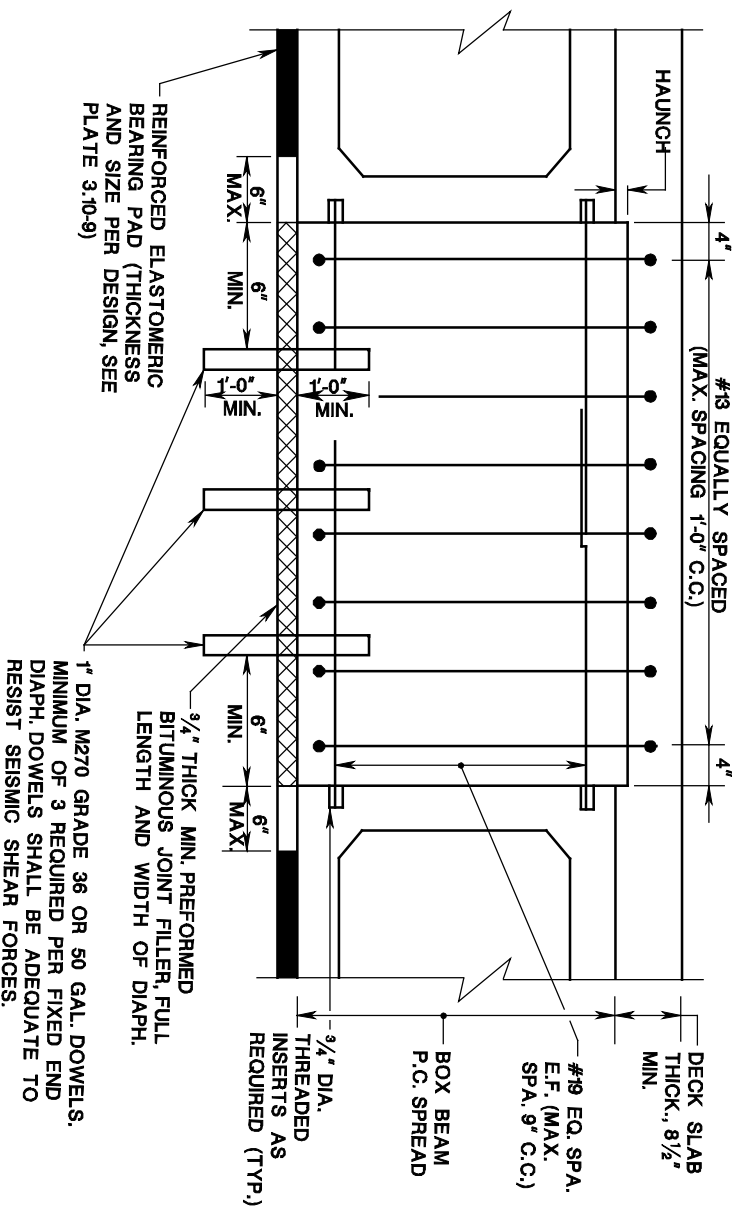


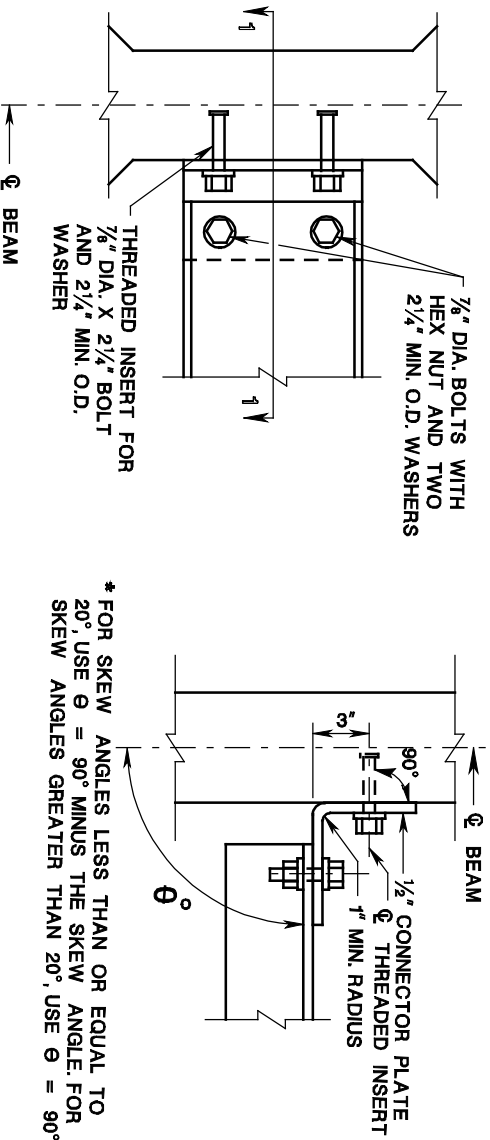
P.C. SPREAD BOX BEAMS DIAPHRAGM DETAILS (SHEET 2 OF 3)

ISSUED: 2009

PLATE
3.10-21



SECTION B-B, FIXED END DIAPHRAGM



SECTION C-C, INTERMEDIATE DIAPHRAGM

SECTION I-1

NOTES:

1. REFERENCE SECTION 25.7 OF THIS MANUAL FOR DESIGN REQUIREMENTS.
2. REFERENCE NOTES 1 AND 2 ON GUIDE SHEET PLATES 3.10-4, 3.10-5 AND 3.10-6 FOR CRITERIA ON THE CORING AND FILLING OF DOVEL HOLES IN ABUTMENTS AND PIER SEATS.
3. WHEN UTILITIES MUST BE LOCATED BETWEEN THE BEAMS INTERMEDIATE DIAPHRAGMS MAY BE REDUCED IN HEIGHT TO 1'-6" MINIMUM.
4. ALL REINFORCING STEEL, DOWELS AND DIMENSIONS SHOWN ARE MINIMUM. MODIFY DETAILS AS REQUIRED BY DESIGN.